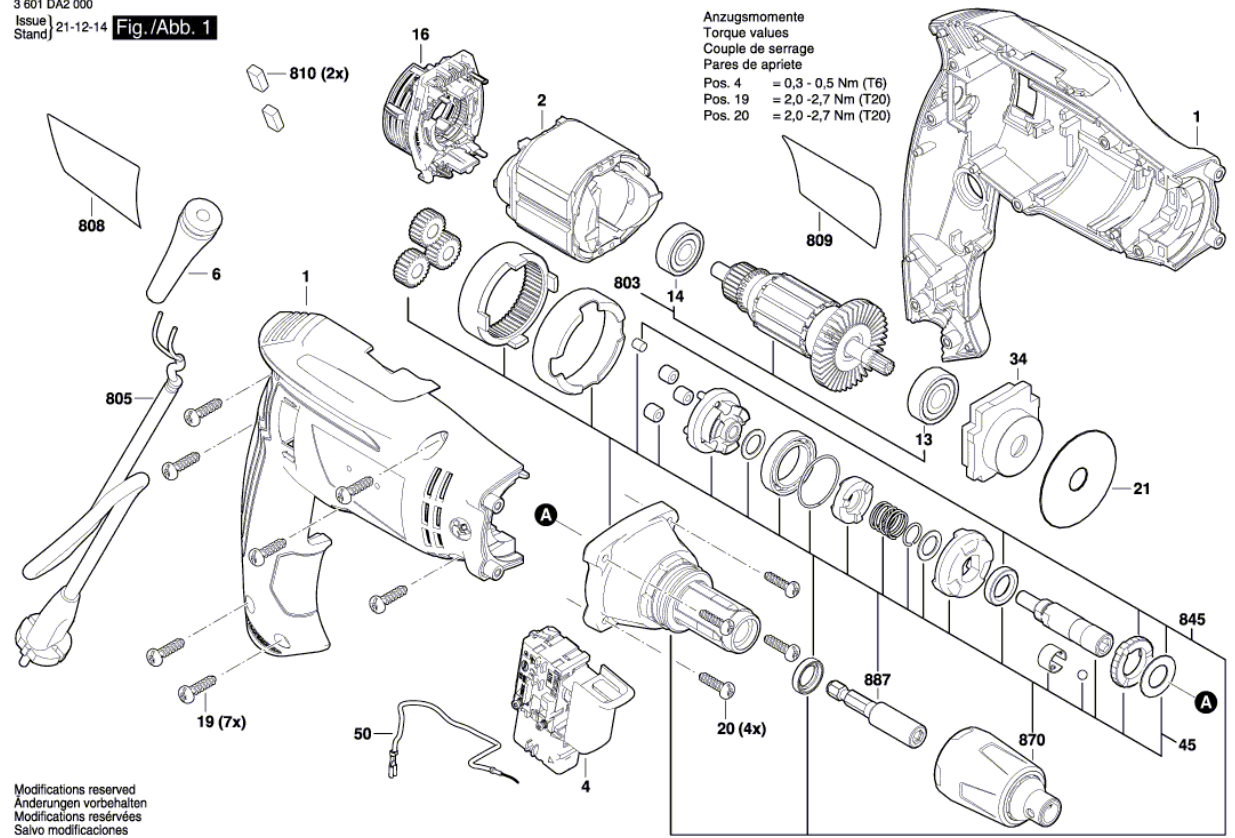


Illustration - Type - E

3 601 DA2 000  
 Issue | 21-12-14  
 Stand | **Fig./Abb. 1**

Anzugsmomente  
 Torque values  
 Couple de serrage  
 Pares de apriete  
 Pos. 4 = 0,3 - 0,5 Nm (T6)  
 Pos. 19 = 2,0 - 2,7 Nm (T20)  
 Pos. 20 = 2,0 - 2,7 Nm (T20)



Modifications reserved  
 Änderungen vorbehalten  
 Modifications réservées  
 Salvo modificaciones

## Spare parts list

Item	Part Number	Description	Illustration
1	1 600 A00 N82	Housing	1
2	1 600 A00 N7Y	Stator	1
4	2 607 200 717	Switch	1
6	2 600 703 017	Grommet Ø6,4-Ø7,2x76 MM	1
13	1 900 905 021	groove ball bearing 9x24x7	1
14	2 609 110 491	Ball Bearing	1
16	2 609 199 403	Brush Plate	1
19	2 603 490 022	Screw 4x16	1
21	2 609 111 419	Friction Washer	1
34	1 600 A01 MN8	Bearing Bracket	1
45	1 600 A01 37V	Gear Unit	1
50	1 600 A02 0XW	Earth Conductor	1
803	1 607 000 E46	Armature set Anker Set 220V-240V	1
805	1 607 000 385	Power supply cord EU 2,6m 2 x 1,0 mm	1
808	1 601 11A 6YV	Type Label	1
809	6 082 942 MV5	Nameplate GTB 650	1
810	2 610 391 290	Carbon-Brush Set	1
845	1 607 000 E4F	Gear Housing	1
870	1 600 A01 A4D	Depth-Gauge	1
887	2 609 111 664	Toolholder	1